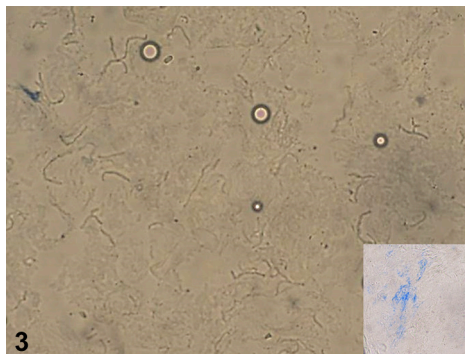
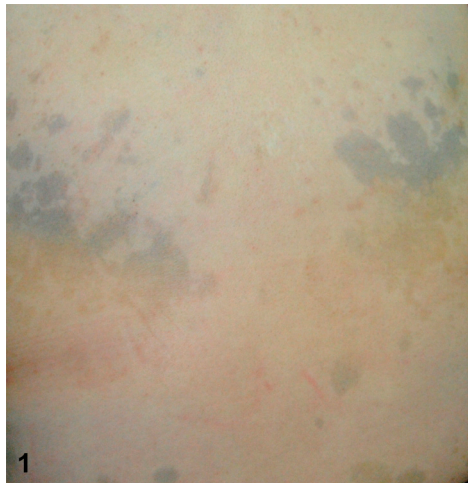


---

# An unusual discoloration

Yu-Ting Lin, MBBS, BSc (Med), and Ying-Yi Chiang, MD  
*Taipei, Taiwan*



A 56-year-old woman presented with a 2-day history of mildly pruritic scaly macules and confluent patches on the upper aspect of her back. The lesions were bluish-green or blue in color except those under the area of her bra, which were exclusively brown (Fig 1). The rest of the history and physical examination were unremarkable. Videodermoscopy revealed blue pigmentation mainly located on the sulcus cutis rather than on top or around the sweat duct openings on the crista cutis (Fig 2). A Wood's lamp examination was unremarkable. A potassium hydroxide test was performed (Fig 3) and a cerulean pigmentation with few fungal hyphae was found under the microscope (Fig 3, *inset*).

1. What is the most likely diagnosis?
  - A. Apocrine chromhidrosis
  - B. Eccrine chromhidrosis
  - C. Pseudoecrine chromhidrosis
  - D. Hematohidrosis
  - E. Exogenous ochronosis

---

From the Department of Dermatology, Wan Fang Hospital, Taipei Medical University, Taipei.

Funding sources: None.

Conflicts of interest: None declared.

Correspondence to: Ying-Yi Chiang, MD, Department of Dermatology, Wan Fang Hospital, Taipei Medical University,

---

No 111, Sec 3, Hsing-Long Rd, Taipei 11696, Taiwan, Republic of China. E-mail: [ellychiang@hotmail.com](mailto:ellychiang@hotmail.com).

J Am Acad Dermatol 2013;69:e157-8.

0190-9622/\$36.00

© 2013 by the American Academy of Dermatology, Inc.

<http://dx.doi.org/10.1016/j.jaad.2013.05.037>

2. What additional investigation is most useful in the management of his condition?
  - A. Complete blood cell count
  - B. Coagulation profile and liver function tests
  - C. Screen for HIV infection
  - D. Bacterial and fungal culture
  - E. Blood test for immunoglobulin E level
  
3. What is the most appropriate first-line treatment?
  - A. Topical calcineurin inhibitors
  - B. Midpotency topical corticosteroid
  - C. Capsaicin cream
  - D. Manual expression of colored secretions and botulinum toxin
  - E. Antifungal therapy

Please visit <http://www.eblueimages.org> to answer these questions.